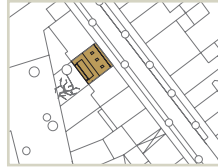


Umbau Wohnhaus F31
Düsseldorf

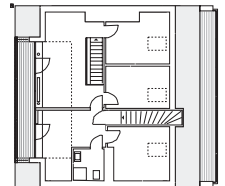
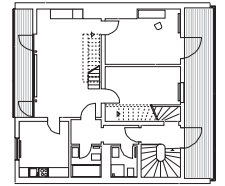
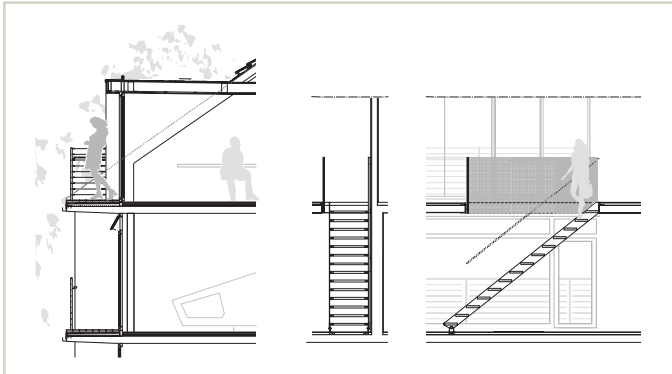
Realisierung 2002-03, LP 1-8



840qm BGF

Baukosten 310.000 EUR

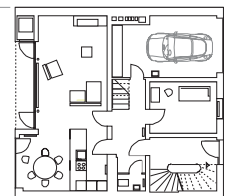
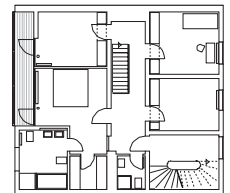
Tragwerksplanung: Ingenieurbüro M.Greipl, Haan



Wohnung 4.OG / Dachgeschoss Detail Gaube und Stahltreppe

Wohnung Erdgeschoss / 1.OG

4.OG / DG



EG / 1.OG



Schnitt und Ansichten Strasse/ Garten

>> Ansicht Strassenseite / Gartenseite

