

Wohnhaus Baesweiler / Aachen  
Passivhaus

Fertigstellung 2010

BGF 370 m<sup>2</sup>



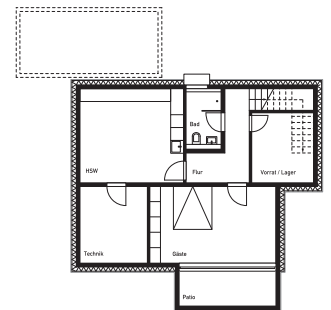
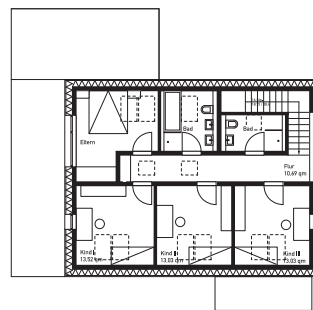
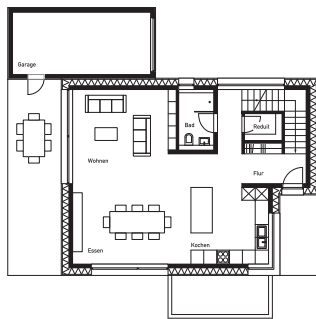
Tragwerksplanung:  
Ing. Büro M. Greipl

Energiekonzept / PHPP  
Ing. Büro Scheuten

TGA  
Ing. Büro PBS & Partner



Gartenansicht



Schnitt

Grundrisse \_ Obergeschoss - Erdgeschoss - Untergeschoss

